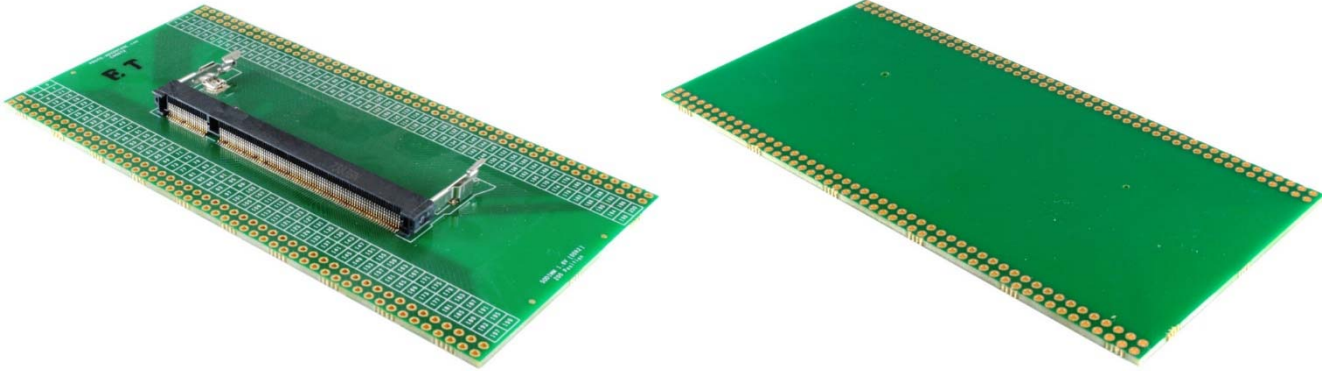


200 Position SODIMM DDR2 (1.8V) SDRAM adapter board



Product Highlights

This adapter comes fully assembled with connector and pins installed.

Specifications

PCB dimensions:	5.05" x 2.5" x 0.063" (128.27mm x 63.5mm x 1.6mm)
PCB construction:	FR-4 UL94V-0
PCB operating temperature range (without connector):	-40°C to +130°C
PCB reflow maximum temperature (without connector):	+260°C
PCB assembly standard:	IPC-A-610 Class II