

Getting Started Guide



Flash/OTP Programming
Adapter Kit

nRF6701

nRF6702

nRF6703

nRF6704



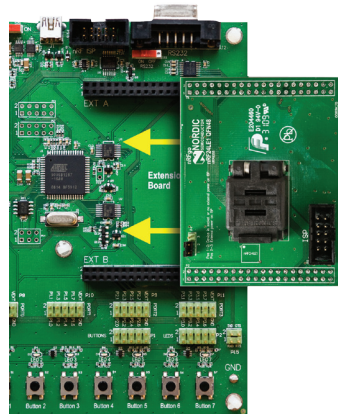
1. Register at www.nordicsemi.com and download all kit software and documentation

1. Go to www.nordicsemi.com.
 2. Log in to your **MyPage** account (or create an account first if you don't already have one).
 3. Select **My Products** from the left menu.
 4. From the **Add Product** list, select **nRF24LE1 Programming Kit**.
 5. Click **Add**.
 6. Click the **Downloads** link in the **Overview, My Products table**. Available documentation and software are listed on the **Downloads** tab.
 7. Below **Software** click **nRFgo Studio** and run the install file.
 8. The software will be available from your Windows **Start** menu.
-

2. Plug in the Flash/OTP Programming Adapter Module

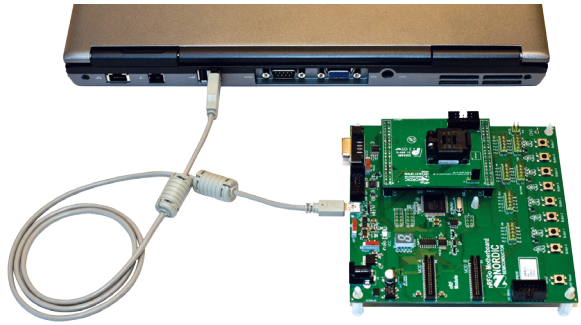
Plug the Flash/OTP programming adapter module into the Extension Board slots **EXT A** and **EXT B** on an nRFGo Starter Kit Motherboard (sold separately).

Note: No nRFgo module can be plugged into the nRFgo Starter Kit Motherboard's nRF Module slots **MOD A** and **MOD B**.



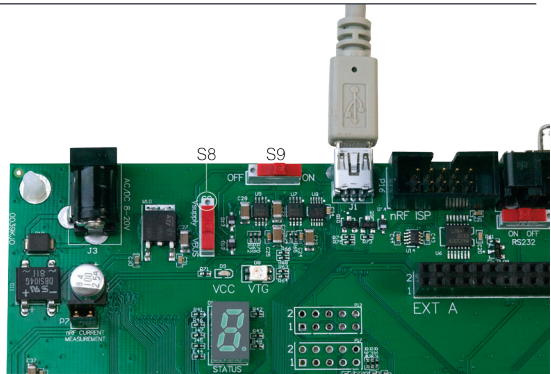
3. Connect the nRFGo Starter Kit Motherboard to a PC

Connect the nRFGo Starter Kit Motherboard to an available USB port on your PC using a USB cable.



4. Power On

1. Turn the **S8** switch on the nRFGo Starter Kit Motherboard to **VBUS**.
2. Turn the **S9** switch on the nRFGo Starter Kit Motherboard to **On**. The **VTG** and **VCC** LEDs will light up green.



5. Start nRFgo Studio

1. From the Windows **Start** menu on your computer go to **All Programs – Nordic Semiconductor – nRFgo Studio** and open **nRFgo Studio.exe**.
2. The connected nRFgo Flash/OTP programming adapter module is found at **Board 0 -> <Extension – nRF24Lxx QFNxx OTP/Flash>** in the nRFgo Studio Device Manager. Make sure the checkbox "Device is OTP" is selected if an OTP device is being programmed.

