



ConnectPort[®] X4
Getting Started Guide

©2014 Digi International Inc.
All rights reserved.

ConnectPort[®], Digi, Digi International, the Digi logo, the Digi website, a Digi International Company, and ConnectPort X are trademarks or registered trademarks of Digi International, Inc. in the United States and other countries worldwide. All other trademarks are the property of their respective owners.

All other trademarks mentioned in this document are the property of their respective owners. Information in this document is subject to change without notice and does not represent a commitment on the part of Digi International.

Digi provides this document "as is," without warranty of any kind, either expressed or implied, including, but not limited to, the implied warranties of fitness or merchantability for a particular purpose. Digi may make improvements and/or changes in this manual or in the product(s) and/or the program(s) described in this manual at any time.

This product could include technical inaccuracies or typographical errors. Changes are periodically made to the information herein; these changes may be incorporated in new editions of the publication.

Table of Contents

Introduction to the ConnectPort X4 5.....	5
Important Information Regarding Your Device.....	5
Using this Guide.....	5
Digi Information.....	6
• Contact Information	6
Chapter 1: ConnectPort X4 Ethernet Models	7
Connecting to the ConnectPort X4 Home Page.....	7
Configuring Ethernet Settings for the ConnectPort X4	10
ConnectPort X4 Ethernet IP Settings Page	10
Viewing ConnectPort X4 IP Address Information	11
Viewing ConnectPort X4 Ethernet Statistics	11
X4 Smart Energy.....	11
Chapter 2: ConnectPort X4 Cellular Models.....	12
Connecting to the ConnectPort X4 Home Page.....	12
Configuring the ConnectPort X4 Cellular Interface	13
GSM/Edge Cellular Configuration Example (AT&T)	13
CDMA Cellular Configuration Example (Verizon)	15
CDMA Cellular Configuration Example (Sprint)	18
Verifying the ConnectPort X4 Cellular Connection Status.....	21
Configuring the ConnectPort X4 IP Gateway Priority	22
Configuring the ConnectPort X4 Ethernet Interface.....	23
Viewing ConnectPort X4 IP Address Information	24
Viewing ConnectPort X4 Ethernet Statistics	26
Chapter 3: ConnectPort X4 WiFi Models	27
Connecting to the ConnectPort X4 Home Page.....	27

Configuring the ConnectPort X4 WiFi Interface	29
ConnectPort X4 WiFi IP Settings Page	30
ConnectPort X4 WiFi LAN Settings Page	31
ConnectPort X4 WiFi Security Settings Page	32
ConnectPort X4 DHCP Server Settings Page	33
Verifying the ConnectPort X4 WiFi Connection Status	34
Configuring the ConnectPort X4 IP Gateway Priority	35
Configuring the ConnectPort X4 Ethernet Interface.....	36
Viewing ConnectPort X4 IP Address Information	37
Viewing ConnectPort X4 Ethernet Statistics	37

Introduction to the ConnectPort X4

Important Information Regarding Your Device

Your device is configured to automatically register with a Device Cloud Technical Support Account when you first power up your device*. Activation with Device Cloud Technical Support is free. Our Device Cloud Technical Support team will only access your device upon your approval. With your consent, the Device Cloud Technical Support team is afforded visibility and access to your device to diagnose and resolve issues, should you require assistance.

For any support queries, please contact the Device Cloud Customer Support Center by phone at 952.912.3456 or via our web portal at: <http://www.digi.com/support/eservice/login.jsp?p=true>

Should you wish to forego the enhanced service and benefits that automated registration with Device Cloud Technical Support provides, you can disable this feature via the gateway's web UI:

- Open the web UI of the gateway using the method outlined in the Quick Start Guide
- Navigate to the **Configuration > Device Cloud** section
- From the “Short Messaging” menu, uncheck the box labeled **Opt-in**.
- To completely disable SMS, uncheck the box labeled **Enable SMS**.
- Uncheck the box labeled **Enable Device-Initiated Device Cloud Connection**.
- Click **Apply**.
- Reboot the gateway

*The registration process involves sending a single SMS message containing the device's mobile phone number. Network costs associated with this single SMS transmission are the customer's responsibility. Any device information stored in the Device Cloud Technical Account is secured with adherence to Device Cloud security and privacy procedures, and will not be disclosed to, or accessible by third parties.

If you currently configure your Digi device using a configuration file (defaults.rci), then in order to disable this feature, you will have to update that file.

Using this Guide

This guide is meant to be used in conjunction with Digi's ConnectPort X4 Quick Start Guides. Depending on which ConnectPort X4 model you have purchased, all of the information in this guide will not be

relevant to the configuration of your ConnectPort X4. To determine which chapters of this guide are relevant to your ConnectPort X4 refer to the following chart:

If you have a	Refer to chapter
ConnectPort X4 with Ethernet ConnectPort X4 IA with Ethernet ConnectPort X4 for Smart Energy with Ethernet	1
ConnectPort X4 with Cellular and Ethernet ConnectPort X4 IA with Cellular and Ethernet	2
ConnectPort X4 with WiMAX and Ethernet ConnectPort X4 IA with WiMAX and Ethernet	3
ConnectPort X4 with Wi-Fi and Ethernet ConnectPort X4 IA with Wi-Fi and Ethernet	4

Digi Information

Contact Information

For more information about your Digi products, or for customer service and technical support, contact Digi International.

To contact Digi International by	Use
Mail	Digi International World Headquarters 11001 Bren Road East Minnetonka, MN 55343
Phone	1-877-434-4439 or 1-952-912-3456
Web	www.digi.com/support

Chapter 1: ConnectPort X4 Ethernet Models

By default, ConnectPort X4 Ethernet models are configured to be DHCP clients. In order to configure your device, simply put it on an Ethernet network with a DHCP Server.

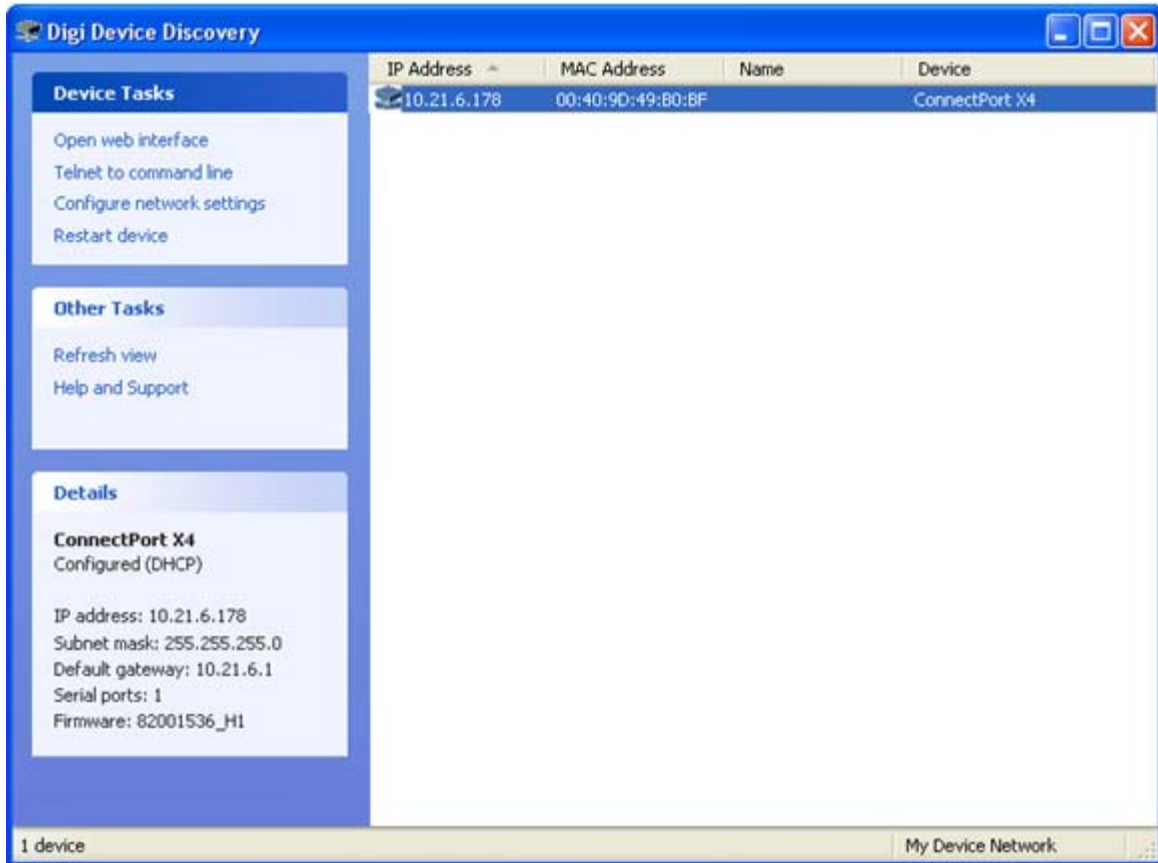
Connecting to the ConnectPort X4 Home Page

If you already know the IP address of your ConnectPort X4 open a web browser and type in the IP address, otherwise use the Digi Device Discovery Utility.

To download the Digi Device Discovery Utility:

1. Navigate to <http://www.digi.com/connectportx4> and then click on the “Download: Digi Device Discovery Utility” link.
2. Click the “Download your file” link and then follow the prompts to install the application.
3. Run the Digi Device Discovery Utility from your PC’s Start Menu (**Digi > Digi Device Discovery > Digi Device Discovery**), if it is not already open.

4. Once the application opens, locate your device within the Digi Device Discovery Application Devices List. The IP address of your device should be displayed.



5. Open a web browser and type in the IP address of your ConnectPort X4 device. This will open the ConnectPort X4's Home page.

After you enter the IP address of the ConnectPort X4 into your web browser, you will see a screen similar to the following:



ConnectPort X4 Configuration and Management

Home

Configuration

- Network
- Mobile
- XBee Network
- Serial Ports
- Camera
- Alarms
- System
- Device Cloud
- Users
- Position

Applications

- Python
- RealPort
- Industrial Automation

Management

- Serial Ports
- Connections
- Event Logging
- Network Services

Administration

- File Management
- X.509 Certificate/Key Management
- Backup/Restore
- Update Firmware
- Factory Default Settings
- System Information
- Reboot

Logout

Home

[Getting Started](#)

Tutorial Not sure what to do next? This [Tutorial](#) can help.

System Summary

Model:	ConnectPort X4
Ethernet MAC Address:	00:40:9D:6D:83:99
Ethernet IP Address:	10.8.16.86
Mobile IP Address:	Not Connected
Description:	None
Contact:	None
Location:	None
Device ID:	00000000-00000000-00409DFF-FF6D8399

Configuring Ethernet Settings for the ConnectPort X4

To configure your device's Ethernet settings open the Ethernet Network Configuration page by clicking on **Configuration > Network** from the left-hand menu.

The screenshot shows the 'Network Configuration' page with a dark blue header. Underneath, the 'Ethernet IP Settings' section is expanded, showing two radio button options: 'Obtain an IP address automatically using DHCP *' (selected) and 'Use the following IP address:'. Below these are three input fields: '* IP Address:' with '192.168.1.1', '* Subnet Mask:' with '255.255.255.0', and 'Default Gateway:' with '0.0.0.0'. There is a checked checkbox for 'Enable AutoIP address assignment' and a note: '* Changes to DHCP, IP address, and Subnet Mask may affect your browser connection.' An 'Apply' button is located below the settings. A list of other network settings is visible below, including DHCP Server Settings, Network Services Settings, Dynamic DNS Update Settings, IP Filtering Settings, IP Forwarding Settings, IP Network Failover Settings, Socket Tunnel Settings, Virtual Private Network (VPN) Settings, IP Pass-through Settings, Host List Settings, Virtual Router Redundancy Protocol (VRRP) Settings, and Advanced Network Settings.

Within the Network Configuration page various Ethernet parameters can be configured depending on your type of installation. Basic settings can be configured in the Ethernet IP Settings page.

ConnectPort X4 Ethernet IP Settings Page

The Ethernet IP Settings page (shown in the image above) allows you to set your device to obtain IP addresses automatically (using DHCP) or enter in your own IP address.

Configure your Ethernet IP settings as desired, click **Apply** when finished.

Viewing ConnectPort X4 IP Address Information

The ConnectPort X4 Home page will display the IP address of the unit.

Viewing ConnectPort X4 Ethernet Statistics

To view information about the Ethernet Link as well as Ethernet and IP statistics, navigate to the **Administration > System Information > Network** page.

X4 Smart Energy

For information regarding connecting your Smart Energy device with the Veris Clamp, reference the X4 Smart Energy Quick Start Guide <http://www-qa.digi.com/>



You have completed basic configuration of your ConnectPort X4.

Chapter 2: ConnectPort X4 Cellular Models

The ConnectPort X4 cellular models have cellular and Ethernet interfaces. By default, the Ethernet interface is configured as a DHCP Server with a static IP Address of 192.168.1.1. This configuration simplifies the initial configuration of the unit.

Connecting to the ConnectPort X4 Home Page

1. Connect one end of the provided Ethernet cable to your PC, and the other end to the ConnectPort X4 Ethernet port (ensure that your PC is configured to obtain its IP address via DHCP).
2. Open the web interface of the ConnectPort X4 by navigating to the 192.168.1.1 address in a web browser on the PC. You will see a screen similar to the following (this is the device's Home page):



ConnectPort X4 Configuration and Management

Home

Configuration

Network
Mobile
XBee Network
Serial Ports
Camera
Alarms
System
Device Cloud
Users
Position

Applications

Python
RealPort
Industrial Automation

Management

Serial Ports
Connections

Home

Getting Started

Tutorial Not sure what to do next? This [Tutorial](#) can help.

System Summary

Model:	ConnectPort X4
Ethernet MAC Address:	00:40:9D:6D:83:99
Ethernet IP Address:	10.8.16.86
Mobile IP Address:	Not Connected
Description:	None
Contact:	None
Location:	None
Device ID :	00000000-00000000-00409DFF-FF6D8399

Configuring the ConnectPort X4 Cellular Interface

Configuring the ConnectPort X4 cellular interfaces will vary depending on whether the ConnectPort X4 supports the GSM/Edge or CDMA cellular network.

This section provides examples of how to configure the ConnectPort X4 cellular interface for three of the popular cellular networks: AT&T, Verizon, and Sprint.

After following the example for your specific cellular provider (for Verizon users see page 15, for Sprint users see page 18), go to the “Verifying the ConnectPort X4 Cellular Connection Status” section on page 21.

GSM/Edge Cellular Configuration Example (AT&T)

To configure a GSM/Edge ConnectPort X4 cellular interface perform the following steps:

1. Click on **Configuration > Mobile** from the left-hand menu.
2. The ConnectPort X4 has two SIM slots with Slot 1 being the primary SIM slot. If you wish to use SIM Slot 2, use the SIM drop-down box to select “Slot 2”, and then click **Set as Primary**.

Mobile Configuration

Select a SIM to configure from the list below.

Settings on this page apply to the selected SIM.

SIM:	Slot 1 <input type="button" value="Set as Primary"/>
IMSI:	310410265385546
ICCID:	89014104232653855469
Phone Number:	19522212376
Status:	Primary

3. Configure the Mobile Service Provider Settings by entering the Service Provider, Service Plan/ APN, and Customer Plan Name appropriate for your environment as shown.

▼ Mobile Settings

Select the service provider, service plan, and connection settings used in connecting to the mobile network.

These settings are provided by and can be retrieved from the service provider.

Mobile Service Provider Settings

Service Provider:

Service Plan / APN:

Custom Plan Name:

Mobile Connection Settings

Re-establish connection when no data is received for a period of time.

Inactivity timeout: seconds

4. Click **Apply** when finished.

Your mobile configuration is complete. Proceed to the “Verifying the ConnectPort X4 Cellular Connection Status” section on page 21.

CDMA Cellular Configuration Example (Verizon)

NOTE: This example assumes that the ESN/MEID# for the ConnectPort X4 has been activated with your cellular provider. You can find the ESN/MEID# on the bottom of your unit.

To configure a CDMA ConnectPort X4 cellular interface perform the following steps:

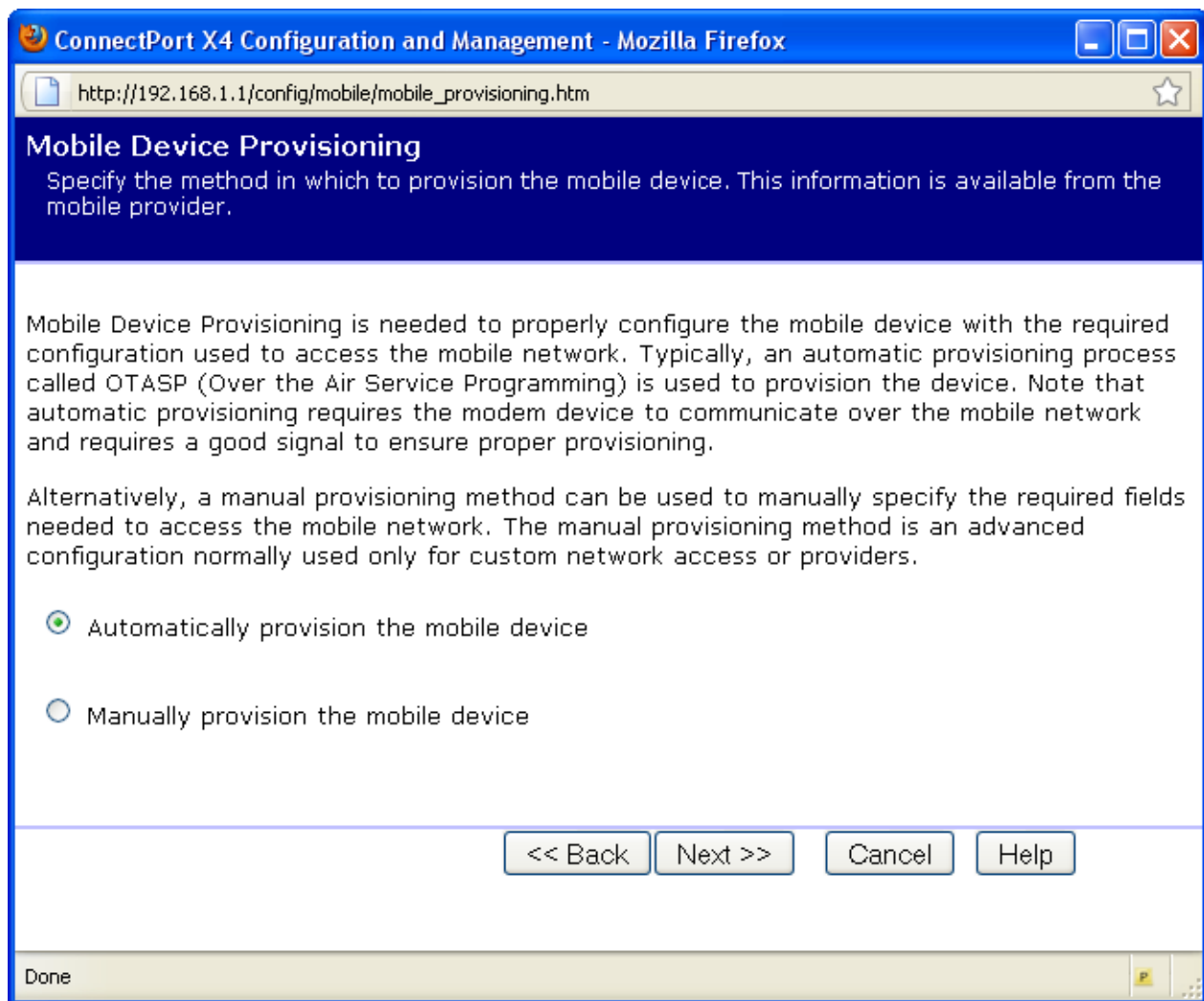
1. Click on **Configuration > Mobile** from the left-hand menu and select **Verizon Wireless** from the Service Provider drop-down menu. You should see a screen similar to the following:

The screenshot shows a web interface titled "Mobile Configuration" with a dark blue header. Below the header is a section for "Mobile Settings" with a light blue background. It contains instructions to select a service provider and plan, and notes that settings are provided by the service provider. Under "Mobile Service Provider Settings", there are two dropdown menus: "Service Provider" set to "Verizon Wireless" and "Mobile IP mode" set to "Mobile IP Preferred". A red "Caution" message states to modify the mobile IP mode only on the recommendation of the service provider. Below this is a red message "This device needs to be provisioned:" followed by a "Provision Device" button. The "Mobile Connection Settings" section has a checked checkbox for "Re-establish connection when no data is received for a period of time." and an "Inactivity timeout:" field set to "3600" seconds. At the bottom of this section are "Apply" and "Set to Defaults" buttons. A sidebar on the left contains links for "GPS Settings", "Advanced Settings", "SureLink Settings", and "Short Message Service (SMS) Settings".

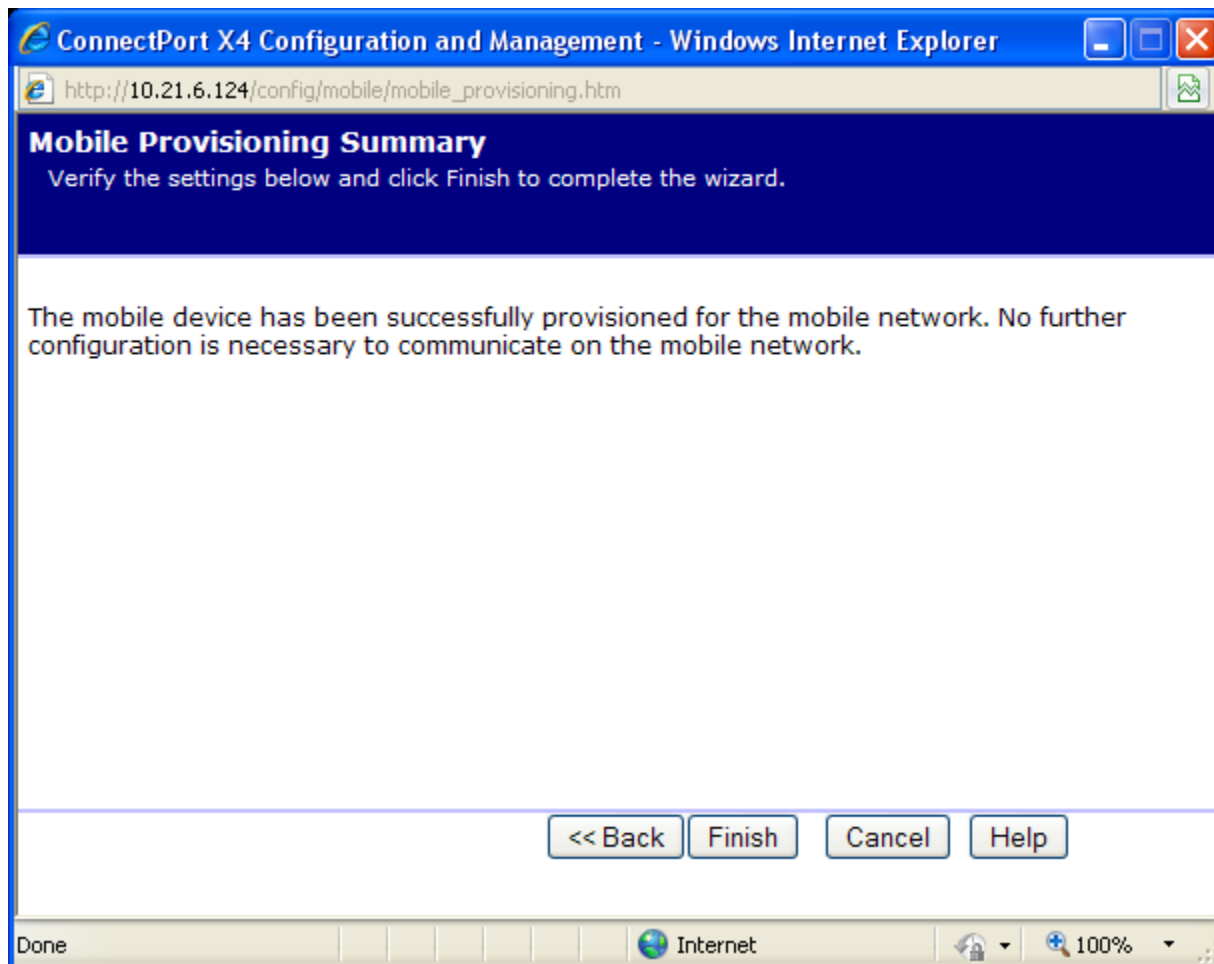
2. After selecting a Service Provider, the unit needs to go through its provisioning process. Click the **Provision Device** button, and then follow the steps displayed within the Mobile Device Provisioning dialog screens.

NOTE: The default options within the Mobile Device Provisioning dialog screens will be correct for most installations.

3. When the following screen is displayed, select the **Automatically provision the mobile device** option.



4. Continue to go through the mobile provisioning process until you see the following screen. This screen will indicate that the mobile provisioning process completed successfully.



5. Click **Finish** to return to the Mobile Configuration page.
6. Click **Apply** on the Mobile Configuration page when finished.

Your Mobile configuration is complete. Proceed to the “Verifying the ConnectPort X4 Cellular Connection Status” section on page 21.

CDMA Cellular Configuration Example (Sprint)

NOTE: This example assumes that the ESN/MEID# for the ConnectPort X4 has been activated with your cellular provider. You can find the ESN/MEID# on the bottom of your unit.

To configure a CDMA ConnectPort X4 cellular interface perform the following steps:

1. Click on **Configuration > Mobile** from the left-hand menu and select **Sprint PCS** from the Service Provider drop-down menu. You should see a screen similar to the following:

Mobile Configuration

▼ **Mobile Settings**

Select the service provider, service plan, and connection settings used in connecting to the mobile network. These settings are provided by and can be retrieved from the service provider.

Mobile Service Provider Settings

Service Provider:

This device needs to be provisioned:

Update the preferred roaming list (PRL):

Mobile Connection Settings

Re-establish connection when no data is received for a period of time.

Inactivity timeout: seconds

▶ **GPS Settings**

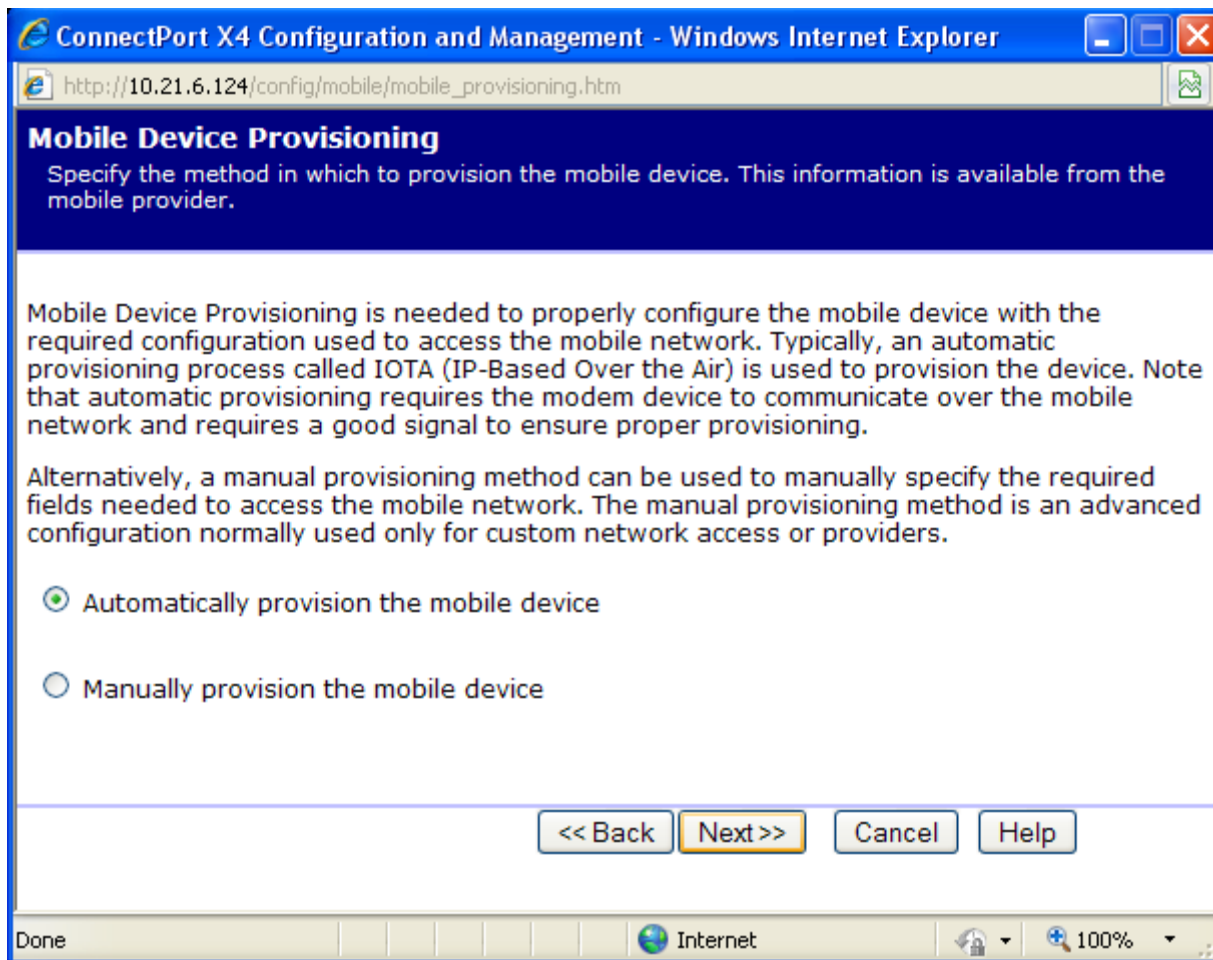
▶ **SureLink Settings**

▶ **Short Message Service (SMS) Settings**

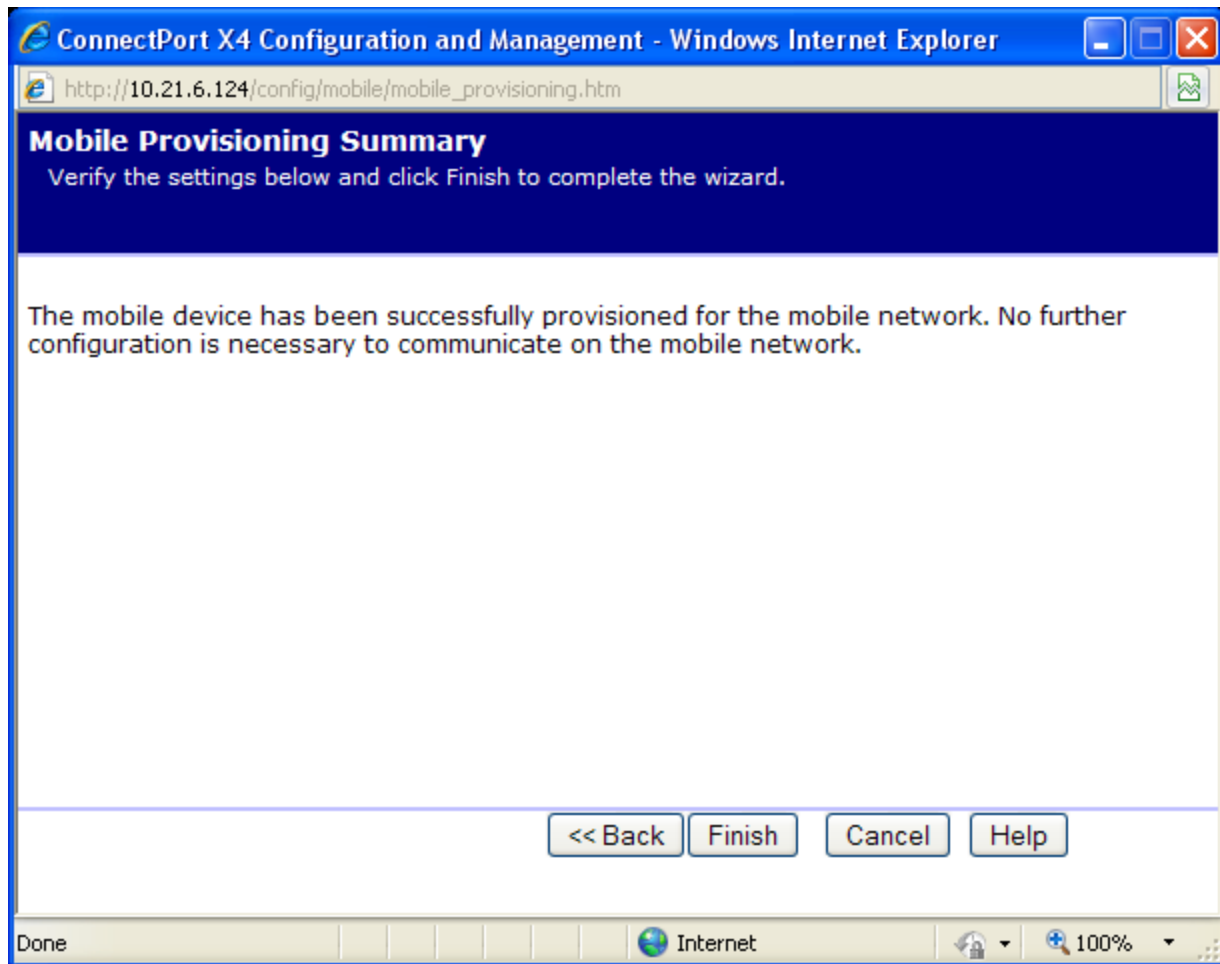
2. After selecting a Service Provider, the unit needs to go through its provisioning process. Click the **Provision Device** button, and then follow the steps displayed within the Mobile Device Provisioning dialog screens.

NOTE: The default options within the Mobile Device Provisioning dialog screens will be correct for most installations.

3. When the following screen is displayed, select the **Automatically provision the mobile device** option.



4. Continue to go through the mobile provisioning process until you see the following screen. This screen will indicate that the mobile provisioning process completed successfully.



5. Click **Finish** to return to the Mobile Configuration page.
6. Click **Apply** on the Mobile Configuration page when finished.

Your Mobile configuration is complete. Proceed to the “Verifying the ConnectPort X4 Cellular Connection Status” section on the next page.

Verifying the ConnectPort X4 Cellular Connection Status

Once the correct cellular configuration has been applied, the ConnectPort X4 will begin to establish the cellular connection. You can verify the connection status by navigating to the **Administration > System Information > Mobile** page.

System Information

▶ General



▶ Serial

▶ Network

▼ Mobile

The following information and statistics can be used to manage and monitor your mobile connection. This information may also be helpful in troubleshooting problems with the mobile network.

SIM Information

Slot	IMSI and ICCID	Phone Number	Status	PIN Status	Active
1	310410265385546 89014104232653855469	19522212376	Primary	Ready	
2	IMSI: N/A ICCID: N/A	N/A	Not configured	N/A	

Mobile Connection

Registration Status: Registered (Home Network)
 Location Area Code: 0xD6EF (55023)
 Cell ID: 0x969E (38558)

Signal Strength:  (-88 dBm)

Mobile Statistics

IP Address: 166.130.120.49
 Primary DNS Address: 209.183.33.23
 Secondary DNS Address: 209.183.33.23
 Data Received: 30222 bytes
 Data Sent: 42331 bytes

Idle Resets: 26
 Inactivity Timer: 3600 seconds (receiving)
 0 seconds (sending)

Mobile Information

NOTE: In the above example, the ConnectPort X4 is connected to the cellular network and has obtained the 166.130.120.49 address for its cellular interface.

Configuring the ConnectPort X4 IP Gateway Priority

Once the ConnectPort X4's cellular interface is connected, it could conceivably reach the Internet via either of its network interfaces (Mobile or Ethernet). Configuring the ConnectPort X4 Gateway Priority List determines the priority for each of its network interfaces. By default the ConnectPort X4 gives the Mobile interface the highest priority.

The ConnectPort X4 IP Gateway Priority List and the DNS Priority List are configurable via the **Configuration > Network > Advanced Network Settings** page, as displayed below:

▼ Advanced Network Settings

The following settings are advanced settings used to fine tune the network connection and network interfaces. The default settings will typically work in most situations.

IP Settings

Host Name:

Static Primary DNS:

Static Secondary DNS:

DNS Priority:

Static	▲
Mobile	
Ethernet	▼

Gateway Priority:

Mobile	▲
Ethernet	▼

See also [IP Network Failover Settings](#) for default gateway management.

DNS Proxy Settings

Enable DNS Proxy Service

Request Cache Size Maximum: entries (16-1024)

Configuring the ConnectPort X4 Ethernet Interface

Now that the ConnectPort X4's cellular interface is configured, you will need to configure the Ethernet interface. The Ethernet configuration changes will involve disabling the DHCP Server and determining how the ConnectPort X4 will be given its IP address.

1. Click on **Configuration > Network** from the left-hand menu. You should see the Network Configuration screen (with the Ethernet IP Settings page displayed by default) as shown:



ConnectPort X4 Configuration and Management

- Home
- Configuration**
 - Network
 - Mobile
 - XBee Network
 - Serial Ports
 - Camera
 - Alarms
 - System
 - Device Cloud
 - Users
 - Position
- Applications**
 - Python
 - RealPort
 - Industrial Automation
- Management**
 - Serial Ports
 - Connections
 - Event Logging
 - Network Services
- Administration**
 - File Management
 - X.509 Certificate/Key Management
 - Backup/Restore
 - Update Firmware
 - Factory Default Settings
 - System Information
 - Reboot
- Logout

Network Configuration

▼ Ethernet IP Settings

Obtain an IP address automatically using DHCP *

 Use the following IP address:

* IP Address:

* Subnet Mask:

Default Gateway:

Enable AutoIP address assignment

* Changes to DHCP, IP address, and Subnet Mask may affect your [browser](#) connection.

Apply

- ▶ DHCP Server Settings
- ▶ Network Services Settings
- ▶ Dynamic DNS Update Settings
- ▶ IP Filtering Settings
- ▶ IP Forwarding Settings
- ▶ IP Network Failover Settings
- ▶ Socket Tunnel Settings
- ▶ Virtual Private Network (VPN) Settings
- ▶ IP Pass-through Settings
- ▶ Host List Settings
- ▶ Virtual Router Redundancy Protocol (VRRP) Settings
- ▶ Advanced Network Settings

2. Click the DHCP Server Settings link and open the DHCP Server Settings page.

3. To disable the DHCP Server, un-check the "Enable Dynamic Host Configuration Protocol (DHCP) Server" entry. Click **Apply** when finished.
4. Return to the Ethernet IP Settings page by clicking the Ethernet IP Settings link.
5. Configure the ConnectPort X4 with either a static IP address, or have it get its IP address from a DHCP Server, whichever method is appropriate. Click **Apply** when finished.

The ConnectPort X4 is now ready to be moved to your Ethernet network, and by default will use its cellular interface as its primary network interface.

Disconnect the ConnectPort X4 from your PC and then connect it to the Ethernet network (if the PC needs to be reconfigured with a static IP address, do this prior to moving the PC to the Ethernet network as well).

Viewing ConnectPort X4 IP Address Information

The ConnectPort X4 Home page will display the IP address for both the Ethernet and Cellular networks.



ConnectPort X4 Configuration and Management

[Home](#)

Configuration

- [Network](#)
- [Mobile](#)
- [XBee Network](#)
- [Serial Ports](#)
- [Camera](#)
- [Alarms](#)
- [System](#)
- [Device Cloud](#)
- [Users](#)
- [Position](#)

Applications

- [Python](#)
- [RealPort](#)
- [Industrial Automation](#)

Management

- [Serial Ports](#)
- [Connections](#)
- [Event Logging](#)
- [Network Services](#)

Administration

- [File Management](#)
- [X.509 Certificate/Key Management](#)
- [Backup/Restore](#)
- [Update Firmware](#)
- [Factory Default Settings](#)
- [System Information](#)
- [Reboot](#)

[Logout](#)

Home

[Getting Started](#)

Tutorial Not sure what to do next? This [Tutorial](#) can help.

[System Summary](#)

Model:	ConnectPort X4
Ethernet MAC Address:	00:40:9D:6D:83:99
Ethernet IP Address:	10.8.16.86
Mobile IP Address:	Not Connected
Description:	None
Contact:	None
Location:	None
Device ID:	00000000-00000000-00409DFF-FF6D8399

Viewing ConnectPort X4 Ethernet Statistics

To view information about the Ethernet Link as well as Ethernet and IP statistics, navigate to the **Administration > System Information > Network** page.



You have completed basic configuration of your ConnectPort X4.

Chapter 3: ConnectPort X4 WiFi Models

The ConnectPort X4 WiFi models have WiFi and Ethernet interfaces. By default, the Ethernet interface is configured as a DHCP Server with a static IP Address of 192.168.1.1. This configuration simplifies the initial configuration of the unit.

Connecting to the ConnectPort X4 Home Page

1. Connect one end of the provided Ethernet cable to your PC, and the other end to the ConnectPort X4 Ethernet port (ensure that your PC is configured to obtain its IP address via DHCP).

2. Open the web interface of the ConnectPort X4 by navigating to the 192.168.1.1 address in a web browser on the PC. You will see a screen similar to the following (this is the device's Home page):

- Home
- Configuration**
 - Network
 - Mobile
 - XBee Network
 - Serial Ports
 - Camera
 - Alarms
 - System
 - Device Cloud
 - Users
 - Position
- Applications
 - Python
 - RealPort
 - Industrial Automation
- Management**
 - Serial Ports
 - Connections
 - Event Logging
 - Network Services
- Administration**
 - File Management
 - X.509 Certificate/Key Management
 - Backup/Restore
 - Update Firmware
 - Factory Default Settings
 - System Information
 - Reboot
- Logout

Home

Getting Started

Tutorial Not sure what to do next? This [Tutorial](#) can help.

System Summary

	Model:	ConnectPort X4
Ethernet MAC Address:		00:40:9D:6D:83:99
Ethernet IP Address:		10.8.16.86
Mobile IP Address:		Not Connected
Description:		None
Contact:		None
Location:		None
Device ID:		00000000-00000000-00409DFF-FF6D8399

Configuring the ConnectPort X4 WiFi Interface

To configure the ConnectPort X4 WiFi interface perform the following steps:

1. Click on **Configuration > Network** from the left-hand menu. You should see the Network Configuration screen (with the Ethernet IP Settings page displayed by default) as shown:

Network Configuration

▼ Ethernet IP Settings

Obtain an IP address automatically using DHCP *

Use the following IP address:

* IP Address:

* Subnet Mask:

Default Gateway:

Enable AutoIP address assignment

* Changes to DHCP, IP address, and Subnet Mask may effect your browser connection.

- ▶ WiFi IP Settings
- ▶ WiFi LAN Settings
- ▶ WiFi Security Settings
- ▶ WiFi 802.1x Authentication Settings
- ▶ DHCP Server Settings
- ▶ Network Services Settings
- ▶ IP Filtering Settings
- ▶ IP Forwarding Settings
- ▶ IP Network Failover Settings
- ▶ Socket Tunnel Settings
- ▶ Virtual Private Network (VPN) Settings
- ▶ Host List Settings
- ▶ Advanced Network Settings

Within the Network Configuration page WiFi IP, LAN, and Security settings can be configured depending on your type of installation.

ConnectPort X4 WiFi IP Settings Page

2. Open this page by clicking on the WiFi IP Settings link (**Configuration > Network > WiFi IP Settings**), and configure how the ConnectPort X4 should determine its IP address on the WiFi network..

▼ **WiFi IP Settings**

Obtain an IP address automatically using DHCP *

Use the following IP address:

* IP Address:

* Subnet Mask:

Default Gateway:

Enable AutoIP address assignment

* Changes to DHCP, IP address, and Subnet Mask may effect your browser connection.

The WiFi IP Settings page allows you to set your ConnectPort X4 to obtain an IP address on the WiFi network automatically (using DHCP) or enter in your own IP address.

3. Configure your WiFi IP settings as desired. Click **Apply** when finished.

ConnectPort X4 WiFi LAN Settings Page

4. Open this page by clicking on the WiFi LAN Settings link (**Configuration > Network > WiFi LAN Settings**).

▼ **WiFi LAN Settings**

Network name: (SSID)

Connect to any available WiFi network

Connect to access point (infrastructure) networks only

Connect to peer-to-peer (ad-hoc) networks only

Country: ▼

Band: ▼

Channel: ▼

Transmit power: dBm

Enable Short Preamble

Enable 802.11d multi domain capability

Enable Antenna Diversity

The WiFi LAN Settings page allows you to set your connection type and name your network. The above example configures the ConnectPort X4 to connect to the "TRENDnet" WiFi network, using Channel 1.

5. Configure your WiFi LAN settings as desired. Click **Apply** when finished.

ConnectPort X4 WiFi Security Settings Page

6. Open this page by clicking on the WiFi Security Settings link (**Configuration > Network > WiFi Security Settings**).

WiFi Security Settings

Network Authentication

Use any available authentication method

Use the following selected method(s):

- Open System
- Shared Key
- WEP with 802.1x authentication
- WPA with pre-shared key (WPA-PSK)
- WPA with 802.1x authentication
- Cisco LEAP
- EAP-FAST

Data Encryption

Use any available encryption method

Use the following selected method(s):

- Open System (no encryption)
- WEP
- TKIP
- CCMP

WEP Keys

Transmit key: 1 2 3 4

Encryption Keys:

1:

2:

3:

4:

WPA PSK

Enter a passphrase when WPA-PSK authentication is enabled. *Note: the passphrase will need to be re-entered whenever the Network SSID is changed.*

Passphrase:

The WiFi Security Settings page allows you to set Network Authentication, Data Encryption, WEP Key, WPA PSK, and Username/Password information for your network. The above example configures the ConnectPort X4 to use WPA-PSK authentication using TKIP encryption with a WPA PSK passphrase.

7. Configure your WiFi security settings as desired. Click **Apply** when finished.

ConnectPort X4 DHCP Server Settings Page

8. If the ConnectPort X4 is to act as a DHCP Server on the WiFi network, open this page by clicking on the DHCP Server Settings link (**Configuration > Network > DHCP Server Settings**).
9. The ConnectPort X4 can act as a DHCP Server on either its WiFi or Ethernet interface. To enable the DHCP Server on the WiFi network, check the "Enable Dynamic Host Configuration Protocol (DHCP) Server" entry and select the "wln0" Scope name. Configure the other parameters as appropriate. Click **Apply** when finished.

▼ DHCP Server Settings

Note: For the DHCP server to operate, the ConnectPort X4 must be configured to use a static IP address. (See the [IP Settings](#) page in the Network Configuration area.) Please review additional notes below.

Enable Dynamic Host Configuration Protocol (DHCP) Server

Scope Name: wln0

* IP Addresses: 192.168.1.100 to 192.168.1.131

Lease Duration: 1 days 0 hrs 0 mins

Wait specified delay before sending DHCP offer reply

Delay: 500 ms

Check that an IP address is not in use before offering it

Send the DHCP Server IP address as a DNS Proxy Server

Send a default gateway in the client lease (DHCP Option 3: Routers on Subnet):

IP address of scope interface (default)

Configured IP address of default gateway for scope interface

This gateway IP address: 0.0.0.0

Do not send a default gateway

Static Lease Reservations **

Enable	IP Address	MAC Address	
No reservations currently configured			
<input checked="" type="checkbox"/>	0.0.0.0	00:00:00:00:00:00	<input type="button" value="Add"/>

[Remove All](#)

Address Exclusions ***

Enable	Start Address	End Address	
No exclusions currently configured			
<input checked="" type="checkbox"/>	0.0.0.0	to 0.0.0.0	<input type="button" value="Add"/>

[Remove All](#)

For DHCP server status and lease management, use the [DHCP Server Management](#) page in the Network Services Management area.

* The IP address pool must specify addresses that are in the subnetwork of the ConnectPort X4. The DHCP server will not operate if this configuration does not meet this requirement

Verifying the ConnectPort X4 WiFi Connection Status

You can verify the WiFi connection status by navigating to the **Administration > System Information > Mobile** page. You should see a screen similar to the following displaying the settings and statistics for the WiFi network.



ConnectPort X4 Configuration and Management

[Home](#)

Configuration

- [Network](#)
- [Mobile](#)
- [XBee Network](#)
- [Serial Ports](#)
- [Camera](#)
- [Alarms](#)
- [System](#)
- [Device Cloud](#)
- [Users](#)
- [Position](#)

Applications

- [Python](#)
- [RealPort](#)
- [Industrial Automation](#)

Management

- [Serial Ports](#)
- [Connections](#)
- [Event Logging](#)
- [Network Services](#)

Administration

- [File Management](#)
- [X.509 Certificate/Key Management](#)
- [Backup/Restore](#)
- [Update Firmware](#)
- [Factory Default Settings](#)
- [System Information](#)
- [Reboot](#)

[Logout](#)

System Information

General

Model:	ConnectPort X4
Ethernet MAC Address:	00:40:9D:6D:83:99
<u>Firmware Version</u> :	2.17.0.5 (Version 82001536_N 08/30/2013)
Boot Version:	1.1.3 (release_82001975_D)
POST Version:	1.1.3 (release_82001753_H)
Product VPD Version:	release_82003236_A
Product ID:	0x0081
Hardware Strapping:	0x0044
CPU Utilization:	3%
Up Time:	2 days 17 hours 6 minutes 26 seconds
Date and Time:	Sat Jan 3 17:06:26 1970 (based on uptime)
Total Memory:	32768 KB
Used Memory:	16124 KB
<u>Free Memory</u> :	16644 KB
Total Flash Filesystem:	7812 KB
Used Flash Filesystem:	625 KB
<u>Free Flash</u> Filesystem:	7187 KB

▶ [Serial](#)

▶ [Network](#)

▶ [Mobile](#)

▶ [IP Network Failover](#)

▶ [Device Cloud](#)

▶ [Position](#)

Configuring the ConnectPort X4 IP Gateway Priority

Once the WiFi interface is connected, the ConnectPort X4 could conceivably reach the Internet via either of its network interfaces (WiFi or Ethernet). Configuring the ConnectPort X4 Gateway Priority List determines the priority for each of its network interfaces. By default the ConnectPort X4 gives the Ethernet interface the highest priority.

The ConnectPort X4 IP Gateway Priority List and the DNS Priority List are configurable via the **Configuration > Network > Advanced Network Settings** page as displayed below.:

▼ Advanced Network Settings

The following settings are advanced settings used to fine tune the network connection and network interfaces. The default settings will typically work in most situations.

IP Settings

Host Name:

Static Primary DNS:

Static Secondary DNS:

DNS Priority: Static ↑
Ethernet ↓
WiFi

Gateway Priority: Ethernet ↑
WiFi ↓

See also [IP Network Failover Settings](#) for default gateway management.

DNS Proxy Settings

Enable DNS Proxy Service

Request Cache Size Maximum: entries (16-1024)

Request Idle Time-To-Live: seconds (10-120)

Request Retries Per DNS Server: retries (0-4)

For new client requests received when the request cache is full:

Replace the Least Recently Used (LRU) client request with the new request

Discard (ignore) new requests until some existing requests have expired

Ethernet Interface

If you wish to change the DNS Server or IP Gateway Priority order, click on the desired entry and use the arrow keys to raise, or lowers its priority in the list of entries. Click **Apply** when finished.

Configuring the ConnectPort X4 Ethernet Interface

Now that the ConnectPort X4's WiFi interface is configured, you will need to configure the Ethernet interface. The Ethernet configuration changes will involve disabling the DHCP Server and determining how the ConnectPort X4 will be given its IP address.

1. Click on **Configuration > Network** from the left-hand menu. You should see the Network Configuration screen (with the Ethernet IP Settings page displayed by default) as shown:



ConnectPort X4 Configuration and Management

- Home
- Configuration**
 - Network
 - Mobile
 - XBee Network
 - Serial Ports
 - Camera
 - Alarms
 - System
 - Device Cloud
 - Users
 - Position
- Applications**
 - Python
 - RealPort
 - Industrial Automation
- Management**
 - Serial Ports
 - Connections
 - Event Logging
 - Network Services
- Administration**
 - File Management
 - X.509 Certificate/Key Management
 - Backup/Restore
 - Update Firmware
 - Factory Default Settings
 - System Information
 - Reboot
- Logout

Network Configuration

▼ **Ethernet IP Settings**

Obtain an IP address automatically using DHCP *
 Use the following IP address:

* IP Address:
 * Subnet Mask:
 Default Gateway:

Enable AutoIP address assignment

* Changes to DHCP, IP address, and Subnet Mask may affect your browser connection.

- ▶ DHCP Server Settings
- ▶ Network Services Settings
- ▶ Dynamic DNS Update Settings
- ▶ IP Filtering Settings
- ▶ IP Forwarding Settings
- ▶ IP Network Failover Settings
- ▶ Socket Tunnel Settings
- ▶ Virtual Private Network (VPN) Settings
- ▶ IP Pass-through Settings
- ▶ Host List Settings
- ▶ Virtual Router Redundancy Protocol (VRRP) Settings
- ▶ Advanced Network Settings

2. Click the DHCP Server Settings link and open the DHCP Server Settings page.

3. The ConnectPort X4 can act as a DHCP Server on either its network interfaces. If it was not configured to act as a DHCP on the WiFi network above, and you do not wish for it to act as a DHCP Server on the Ethernet network, disable the DHCP Server by un-checking the "Enable Dynamic Host Configuration Protocol (DHCP) Server" entry. Click **Apply** when finished.

The ConnectPort X4 is now ready to be moved to your Ethernet network, and by default will use its Ethernet network as its primary network interface.

Disconnect the ConnectPort X4 from your PC and then connect it to the Ethernet network (if the PC needs to be reconfigured with a static IP address, do this prior to moving the PC to the Ethernet network as well).

Viewing ConnectPort X4 IP Address Information

The ConnectPort X4 Home page will display the IP address for both the Ethernet and WiFi networks.

Viewing ConnectPort X4 Ethernet Statistics

To view information about the Ethernet Link as well as Ethernet and IP statistics, navigate to the **Administration > System Information > Network** page.



You have completed basic configuration of your ConnectPort X4.